



Przemkow Landscape Park – key issues in wetlands restoration and management

**Warsaw Agricultural University
Department of Hydraulic Engineering
and Environmental Recultivation**



Presentation plan:

- ✚ **The localization of the Przemkow Wetlands**
- ✚ **The management of the Przemkow Wetlands in the past**
- ✚ **The structure of the land reclamation system near Przemkow**
- ✚ **The management plans for each polder and fishing ponds**
- ✚ **Current problems in environmental protection of the Przemkow Swamps**
- ✚ **Future management goals**

Introduction

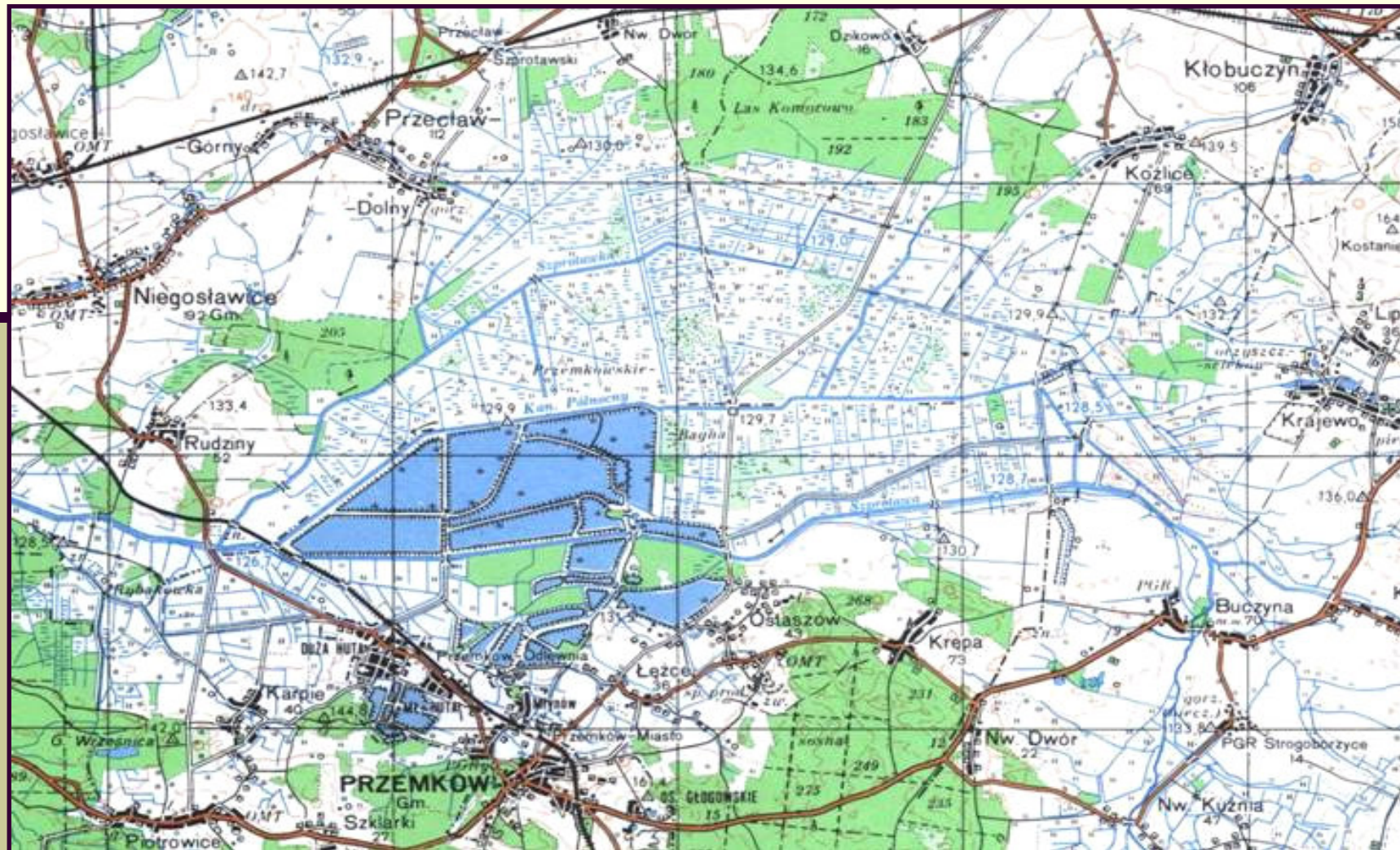
Przemkow Landscape Park

- ✚ The Szprotawska Plain
- ✚ The Lubinska Upland
- ✚ The Nadbobrzanska Plain
- ✚ The Legnicka Plain





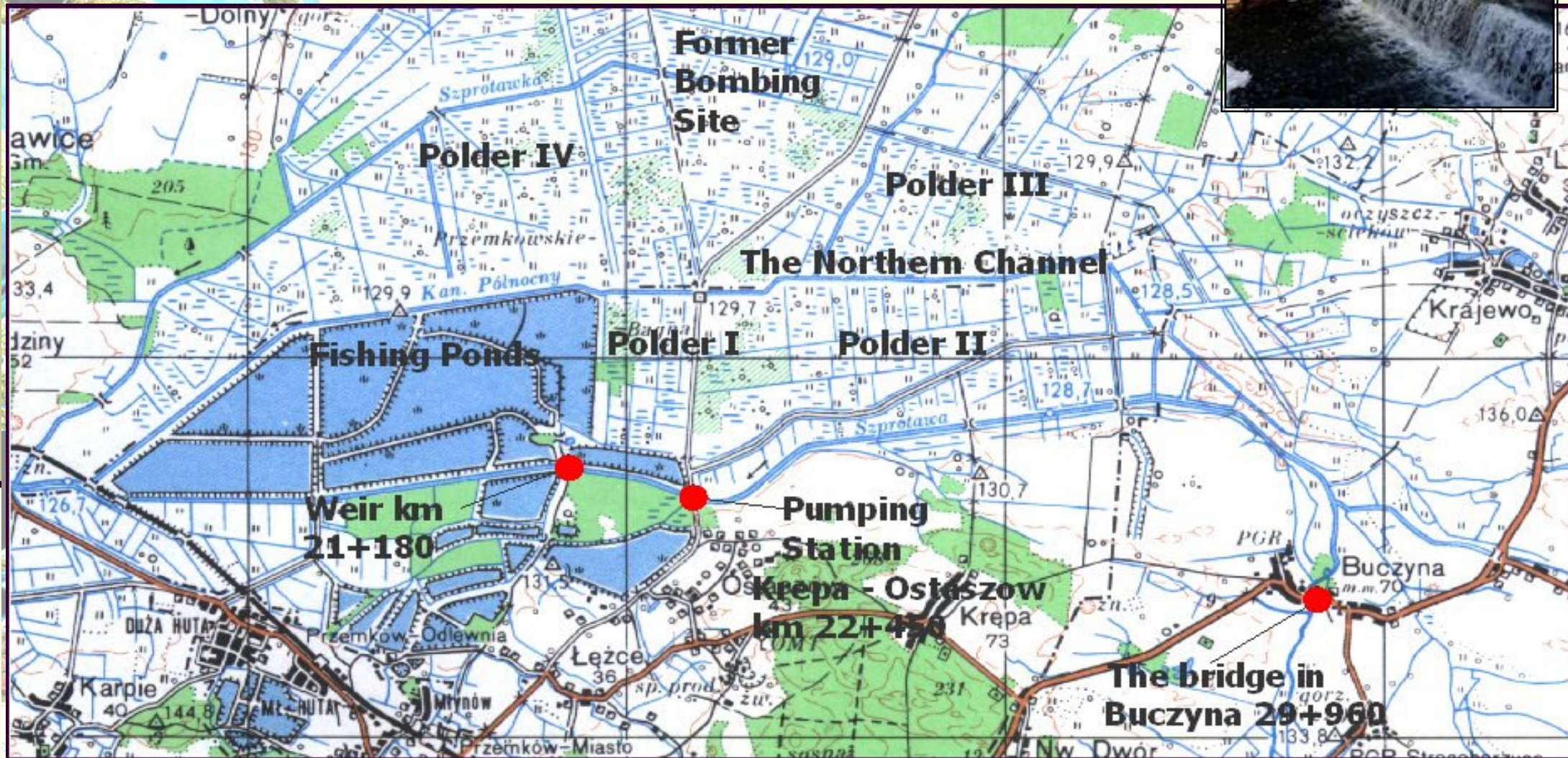
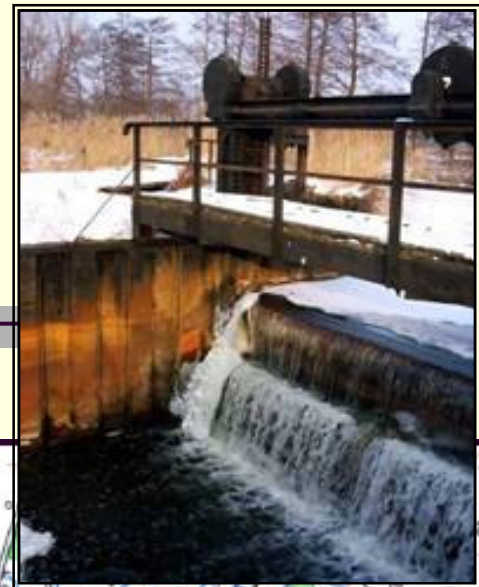
Przemków land reclamation system and fishing ponds



Przemkow wetlands management in the past

- ✿ **1880** - the construction of the first fish pond and the weir across Szprotawa river in km 21+180
- ✿ **1920** - the beginning of land reclamation works in Szprotawa valley near Przemkow by the Germans
- ✿ **From 1934 to 1944** - the development of agriculture on polders in Przemkow
- ✿ **1950** - the meadows became the military area of the Russian army
- ✿ **From 1965 to 1975** - the building of fishing ponds system which used a total area of 900 hectares
- ✿ **1992** – The Russian army withdrawal
- ✿ **1993** – The development of environmental protection on a part of the former military grounds by the Voivode of Legnica
- ✿ **1997** - The foundation of Przemkow Landscape Park

Przemkow land reclamation system and fishing ponds





Polder I

- ✿ **Total area : 110 hectares**
- ✿ **Until 1980 there used to be 70 hectares of sedge meadows of high environmental value because of rare bird species**
- ✿ **Currently the main objective is to maintain proper nesting conditions for bird fauna**
- ✿ **Upper parts of this polder will be devoted to grazing and mowing**



Polder II

- ✚ **Total area : 520 hectares**
- ✚ **The management of its western part will depend on bird breeding needs**
- ✚ **The eastern part is planned to be a grassland which will be managed according to agro-environmental programmes**



Polder III

- ✚ **Total area around 1200 hectares**
- ✚ **It is expected that the meadows of polder III will be mowed with respect to bird fauna demands**
- ✚ **Due to the high cost of mowing after the plant ecology studies major part of the polder will be left for the secondary succession**



Polder IV

- ✚ **Total area around 1200 hectares**
- ✚ **Part of this polder will also be devoted to farm animals grazing**
- ✚ **An important goal is to preserve meadows and forests in this part of Przemkow wetlands**

An aerial photograph of a fish pond, showing a small boat and a person in the water. The pond is surrounded by a yellowish-brown landscape, possibly a dry lake bed or a field. The text "Fish ponds" is written in a bold, black, sans-serif font in the top left corner.

Fish ponds

- ✿ **Total area : 900 hectares**
- ✿ **Their maintenance requires huge supply of water**
- ✿ **At present their management is extensive and it will continue in the future**

Current problems



- ❖ The abandonment of agriculture on polders in Przemkow as well as the control of hydrotechnical infrastructure
- ❖ Frequent floods on several areas due to lack of weirs and poor condition of irrigation systems
- ❖ Necessity of maintaining high water level of Szprotawa for ponds supply
- ❖ Heavily drainage of the area along Szprotwa due to the existing pumping station and drainage facilities. The lowering of water is necessary for drainage of a few agriculture fields south to the Park.
- ❖ Lack of knowledge on regional groundwater system and limited knowledge on surface water flow characteristics.
- ❖ Bush and reed succession on significant part of the system



The current PIN-MATRA project goals

- Identification of water management goals for each polder and ponds supporting the ecological goals set by their managers
- Assessment of risk in obtaining these goals due to the constraints on hydrological systems
- Supporting the Park managers on working out the sustainable solutions for polders management
- Setting up the monitoring system of hydrological processes



Thank You!